



CROWNE PLAZA
HOTELS & RESORTS



Crowne Plaza Hotels Ireland

Crowne Plaza Dublin- Airport /Northwood



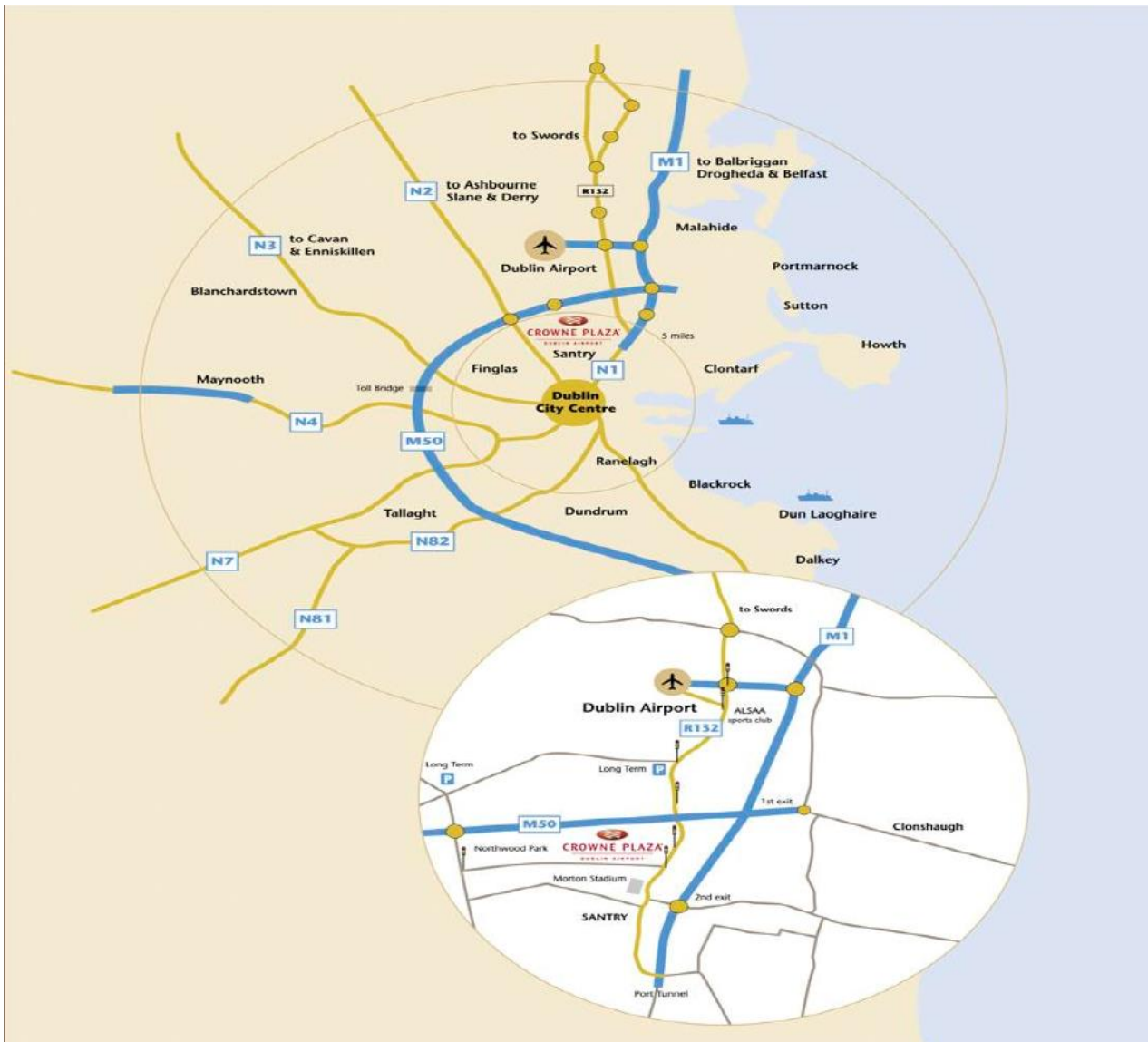
Crowne Plaza

Holiday Inn

85 acre
parkland
setting

Green
environment
(no typical
airport
environment)

The Location



10 minutes
from Dublin
airport

15 minutes
from city centre

Airport
courtesy coach

Public
transport to city
centre 2 min.
walking
distance

Hotel Facilities

Accommodation Overview

- 209 bedrooms Total
- 45 Executive Guest Bedrooms
- 2 Royal Suites
- 75 Twin Rooms
- Executive Club Lounge
- In Room Services including
 - Air Conditioning
 - Safe
 - European & American electrical sockets
 - In-room WiFi free of charge 400MB
 - Iron & Ironing Board
 - Most rooms with separate bath/shower
 - **214 rooms at Holiday Inn Express (adjacent to Crowne Plaza)**

Conference and Meeting Overview

25 meeting rooms

Redwood Suite Conference Room for up to 1000 delegates

Dedicated Business Centre

Food & Beverage Overview

Touzai Restaurant – 200 Seat with Asian Fusion Cuisine

Cinnabar Red Hotel Bar – 120 seat hotel bar

Inca – coffee lounge located in hotel lobby

Other Hotel Features

Fully equipped gymnasium

Multistory car park (366 spaces)

Complimentary Airport Shuttle Service – operates every 30 mins from 5am to midnight

Complimentary WiFi throughout all areas



Standard room



Suite living room

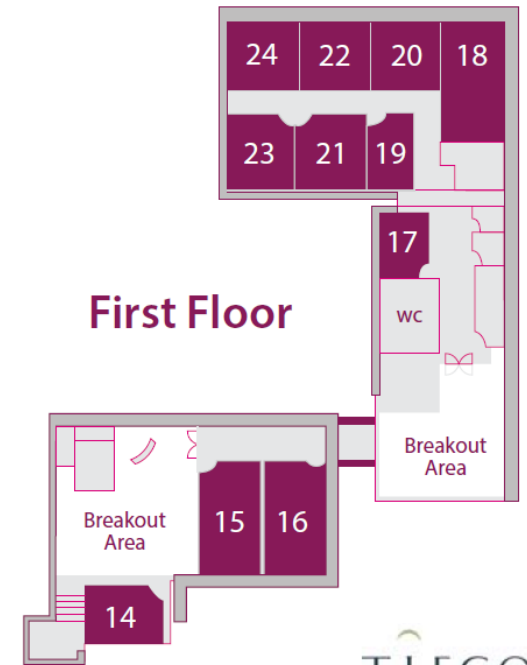
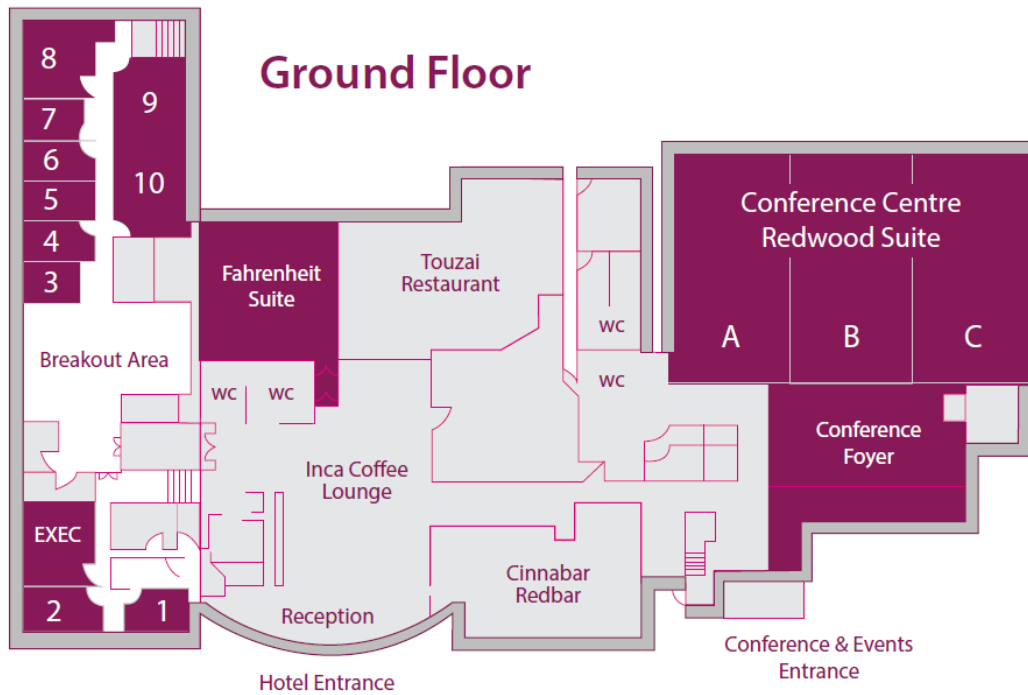


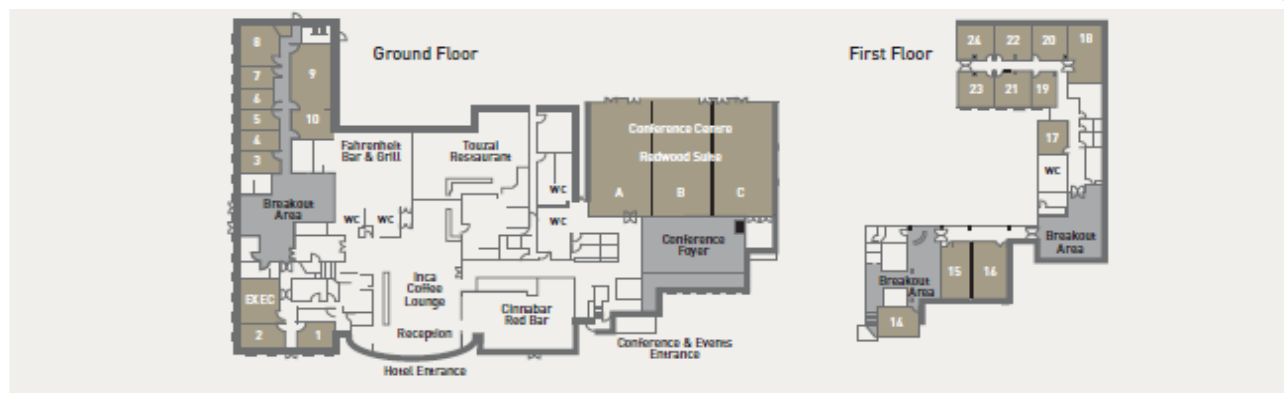
Holiday Inn Express bedroom





Floor Plans





Room	Location	Ceiling Height (M)	Length Width (M)	Theatre	Classroom	U-Shape	Banquet	B/room
Redwood Suite [A, B & C] & Pre Conference Area	Ground	-	-	1,000	-	-	750	-
Redwood Suite [A, B & C]	Ground	4.5	30 X 20	850	400	150	675	-
Redwood Suite [A & B]	Ground	4.5	20 X 20	550	250	90	450	-
Redwood Suite [B & C]	Ground	4.5	20 X 20	550	250	90	150	-
Redwood Suite A	Ground	4.5	10 X 20	275	125	60	225	60
Redwood Suite B	Ground	4.5	10 X 20	275	125	60	225	60
Redwood Suite C	Ground	4.5	10 X 20	275	125	60	225	60
Meeting Room 1	Ground	3.1	5.5 X 5.0	20	-	8	-	10
Meeting Room 2	Ground	3.1	8.0 X 5.3	30	16	16	-	16
Meeting Room 3	Ground	3.1	7.0 X 3.6	20	-	-	-	12
Meeting Room 4	Ground	3.1	7.0 X 3.6	20	-	-	-	12
Meeting Room 5	Ground	3.1	7.0 X 3.6	20	-	-	-	12
Meeting Room 6	Ground	3.1	6.1 X 3.6	20	-	-	-	12
Meeting Room 7	Ground	3.1	7.0 X 3.6	20	-	-	-	12
Meeting Room 8	Ground	3.1	7.0 X 7.4	50	24	24	-	24
Meeting Room 9	Ground	3.1	7.0 X 3.7	20	-	-	-	12
Meeting Room 10	Ground	3.1	7.0 X 7.4	50	24	24	-	24
Meeting Room 9/10	Ground	3.1	7.0 X 11.1	70	32	32	48	32
Executive Boardroom	Ground	3.1	7.0 X 7.4	-	-	-	-	12
Meeting Room 14	First Floor	2.7	7.3 X 4.8	25	12	14	-	15
Meeting Room 15	First Floor	2.7	10.4 X 5.1	50	24	24	-	24
Meeting Room 16	First Floor	2.7	10.4 X 6.1	50	24	24	-	24
Meeting Room 15 & 16	First Floor	2.7	10.4 X 11.2	100	50	35	72	35
Meeting Room 17	First Floor	2.7	5.0 X 5.9	25	8	8	-	12
Meeting Room 18	First Floor	2.7	10.5 X 5.9	50	24	24	-	24
Meeting Room 19	First Floor	2.7	4.0 X 6.3	20	8	8	-	12
Meeting Room 20	First Floor	2.7	5.9 X 6.3	25	14	14	-	14
Meeting Room 21	First Floor	2.7	5.9 X 6.3	25	14	14	-	14
Meeting Room 22	First Floor	2.7	5.9 X 6.3	25	14	14	-	14
Meeting Room 23	First Floor	2.7	5.9 X 6.3	25	14	14	-	14
Meeting Room 24	First Floor	2.7	5.9 X 6.3	25	14	14	-	14

Redwood Suite, 625 sqm, 4.5m height



Redwood Suite



Redwood Suite networking Dinner



Redwood Foyer, exhibition area



Fahrenheit Suite – Break out room for 180 people



Break out room samples

Room 14

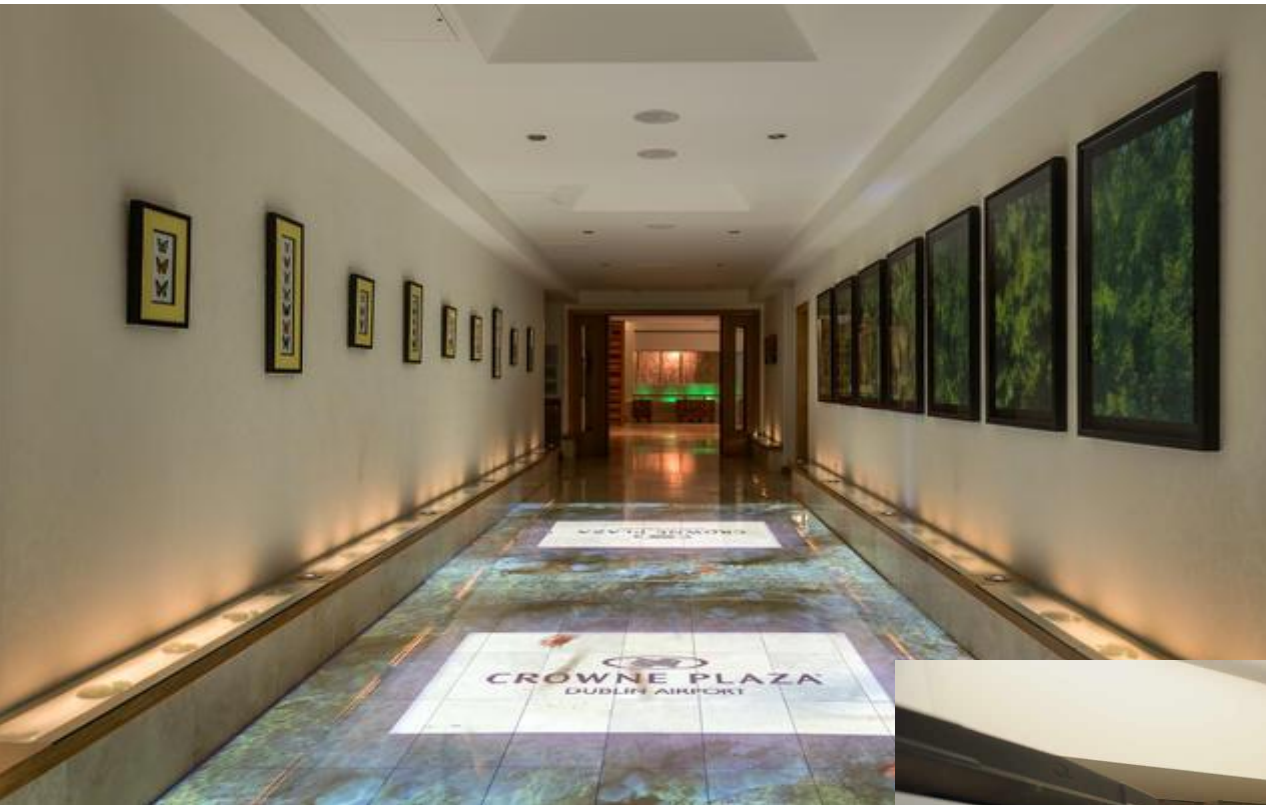


Room 15/16



Exec Boardroom

Interactive walkway Logo display for sponsoring



Registration area Redwood Suite

